

## QUICK START GUIDE



Applicator



Transmitter

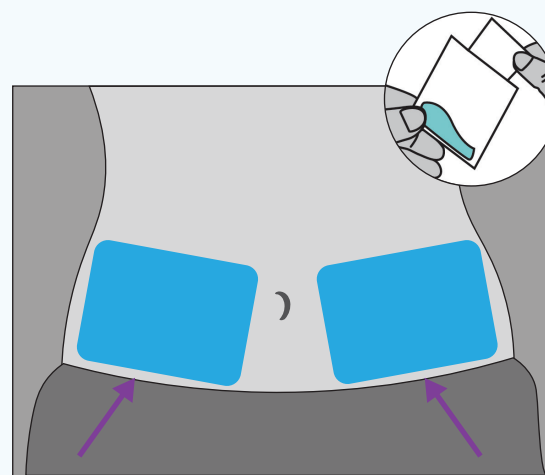


Sensor



Releaser

### 1. CHOOSE SENSOR SITE



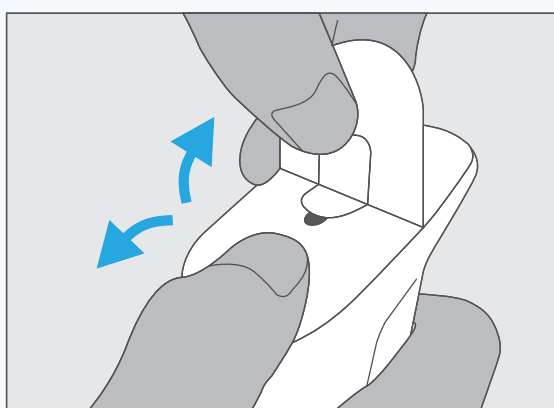
Choose a sensor placement site on the abdomen

Clean the site with alcohol wipes and let the area dry completely

- 5 cm away from the belly button
- 5 cm away from the insulin injection site
- Avoid fatty clotting site, tattoos, scars
- Shave the spot if it's hairy

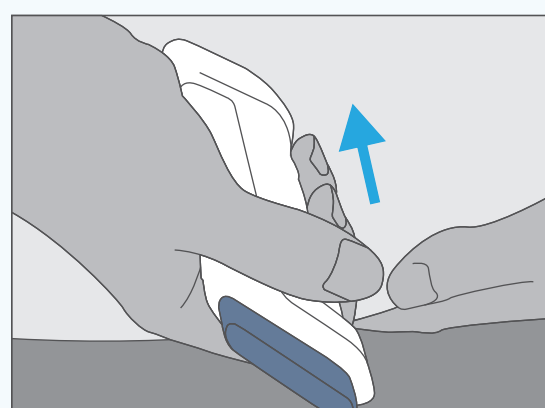
Do not use if the package is damaged or expired!

### 2. REMOVE THE PROTECTIVE LINERS



Press the sensor on one side and remove the protective liners, then remove the other piece of liner carefully.

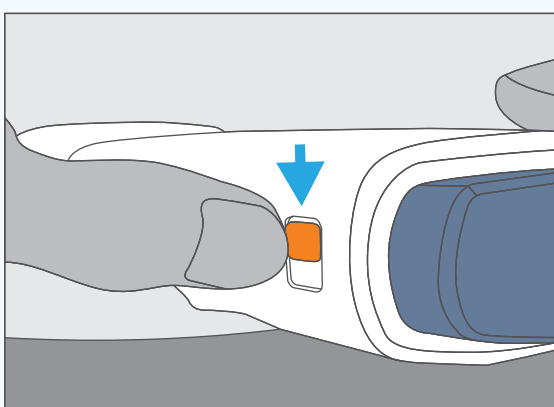
### 3. PLACE THE SENSOR



Place the sensor horizontally on your abdomen, and press the applicator firmly against your skin

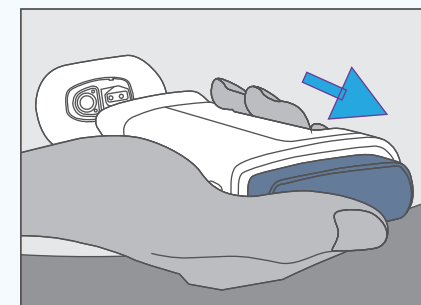
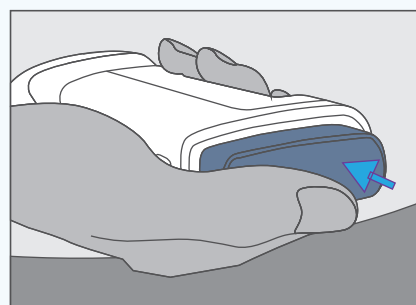
[watch video](#)

### 4. UNLOCK THE APPLICATOR



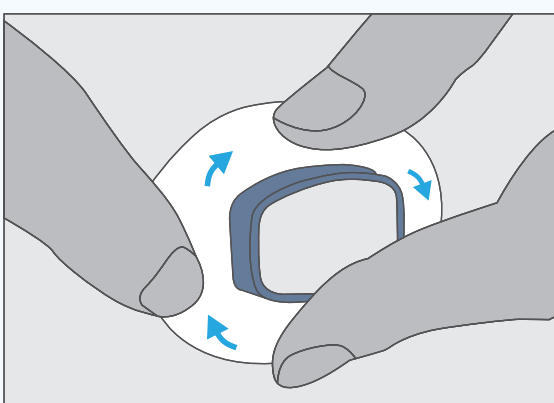
Hold the applicator steady and slide the safety lock button from "locked" to "unlocked"

### 5. PRESS THE TOP BUTTON




- Press the insertion button on top of the applicator.
- You could hear a clear snap when it is triggered.
- Then remove the disposable applicator **from the insertion direction**

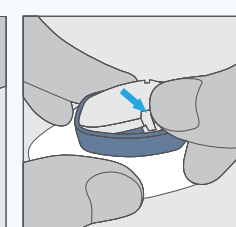
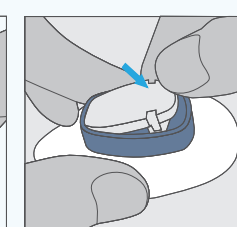
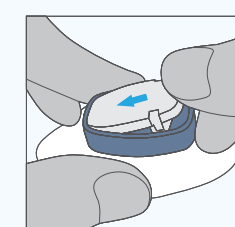
### 6. PRESS THE ADHESIVE TAPE



Press the sensor and rub around the adhesive tape, to make sure it is firmly attached to your skin

### 7. ATTACH THE TRANSMITTER

- Clean the bottom of the transmitter with an alcohol wipe and wait until it dries completely
- Check the pointy side  and 2 slots side

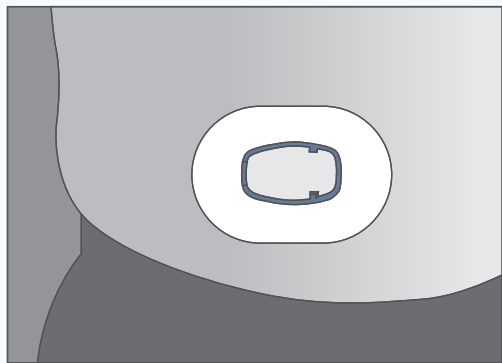


- Put the pointy side into sensor base. Then press down one slot into the sensor base until you hear a clear click sound, then press the other slot until you hear a click sound

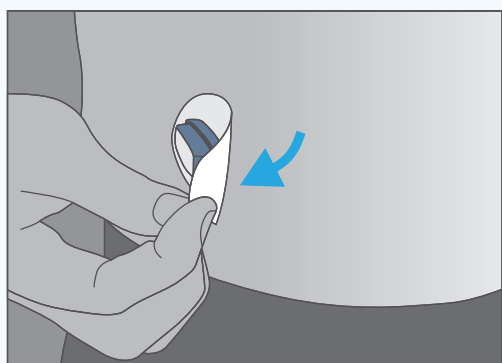
[watch video](#)

### 1. REMOVE SENSOR & TRANSMITTER

watch video

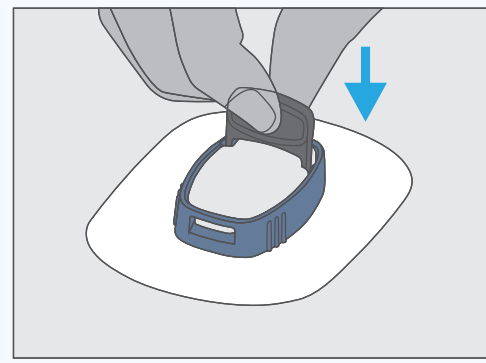


Remove sensor and transmitter together off your skin.

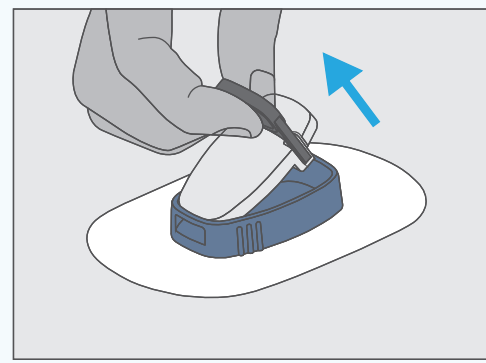


Gently lift the edge of the adhesive tape from your skin, and remove the sensor from one side to the other

### 2. REMOVE TRANSMITTER



Take a releaser and pin it into the sensor as shown above



Then pull it out to remove the transmitter from sensor.

**TRANSMITTER IS REUSABLE.  
PLEASE KEEP IT CAREFULLY.**

### 3. CLEAN & DISCARD



Clean your transmitter with an alcohol wipe, then put it back to package if not using, or attach it to a new sensor to start a new session



Put the releaser back to its package



Please refer to local regulation policy, safely discard the sensor



BE IN CHARGE OF YOUR DIABETES

**GO FREE**  
*with no fingerpricks*

# intelliGO

CONTINUOUS GLUCOSE MONITORING SYSTEM

## free

#### Important Information before using the product

Please review product instructions carefully before using the product. The instructions have important information, including indications, contradictions and warnings.

To get instruction, go to read carefully the IFU of the product inside the packaging or contact your local distributor.



INTELLIGO B.V.  
Keizersgracht 241, Amsterdam, 1016EA, Netherlands  
[www.intelligofree.com](http://www.intelligofree.com)

